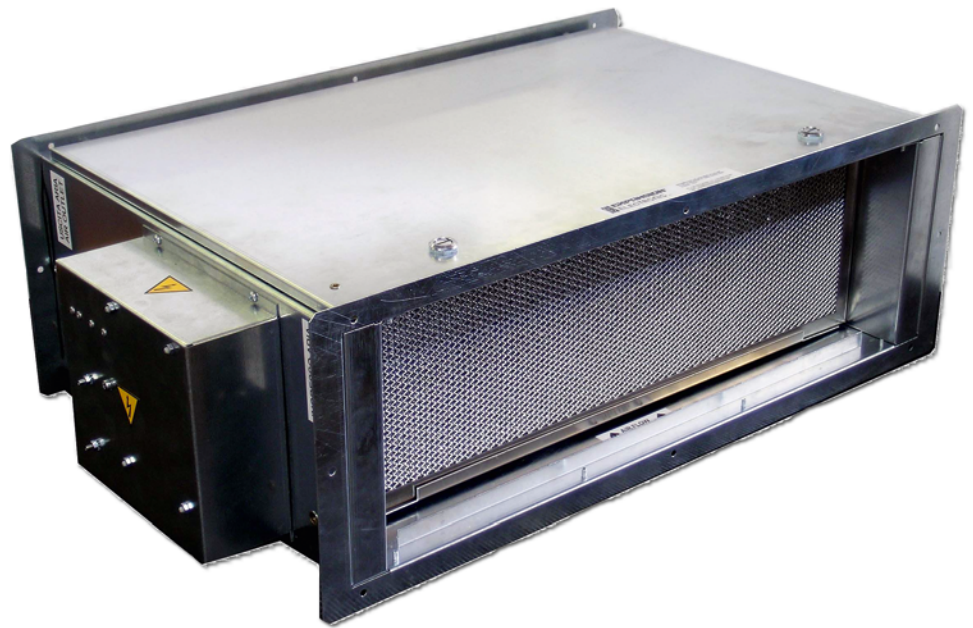


# RAS

1000  
1500



## DESCRIPTION

The RAS units have been designed and developed to filter intake air inside the ventilation ducts, but they are also widely used to reach the required level of IAQ (Indoor Air Quality).

They comprise a galvanised sheet metal structure and a high performance filtering assembly that assures high filtering efficiency using two different operating technologies: BASIC FILTERING and ENERGY FILTERING.

The units can be installed on the ceiling with brackets or directly on the flanges of the ventilation, conditioning and intake air ducts.

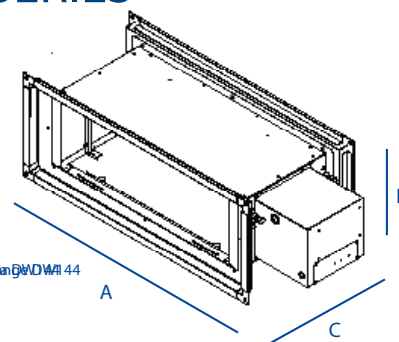
The electronic circuit, located on the side of the machine and fitted with LED's, signals the current condition of the filter.

## TECHNICAL SPECIFICATIONS

MODELLO	u.m.	FILTRAZIONE BASE				FILTRAZIONE ENERGY			
RAS1000		Portata				Portata			
	m³/h	250	500	750	1000	250	500	750	1000
Efficienza Filtr. 0,3÷0,5µm		99,21 %	98,69 %	93,03 %	85,00 %	99,79 %	99,52 %	97,96 %	93,26 %
Potenza	W	50	50	50	50	60	60	60	60
Perdita Pressione	Pa	10	25	35	55	10	25	35	55
RAS1500		Portata				Portata			
	m³/h	370	740	1110	1480	370	740	1110	1480
Efficienza Filtr. 0,3÷0,5µm		99,21 %	98,69 %	93,03 %	85,00 %	99,79 %	99,52 %	97,96 %	93,26 %
Potenza	W	50	50	50	50	60	60	60	60
Perdita Pressione	Pa	10	25	35	55	10	25	35	55

MODELLO	u.m.	RAS1000	RAS1500
Alimentazione	V-Hz	230/50	230/50
Dimensioni AxBxC	mm	660x230x290	760x264x290
Celle elettrostatiche	n°	1	1
Prefiltri metallici	n°	1	1
Peso	Kg	13	15
Installazione		soffitto*	soffitto*

## RAS SERIES

1000  
1500


\*with the filter fan fan BMD 44

## TECHNOLOGIES

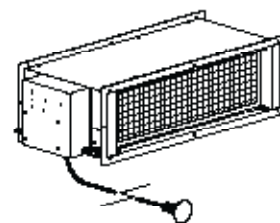
The RAS series uses 2 different technologies:

### BASIC FILTERING

The BASIC FILTERING technology is based on the traditional air purification system using electrostatic filters. This technology is the simplest and earliest version of electrostatic filtration and uses standard applications and management systems.

### ENERGY FILTERING

The ENERGY FILTERING technology filters the air using the AFC SYSTEM® system. The high-power electronics used constantly and continuously controls air filtering.



The electronic circuit, mounted on the side of the unit, is fitted on request with a remote signalling cable in order to assure correct filter operation.

## CERTIFICATIONS

ILH BERLIN  
INSTITUT FÜR LUFTHYGIENE

BSRIA


CETIAT  
ensemble, innover et valider

CE



Standard UNI 11254

